

RADMON 36 LD Chip Carrier

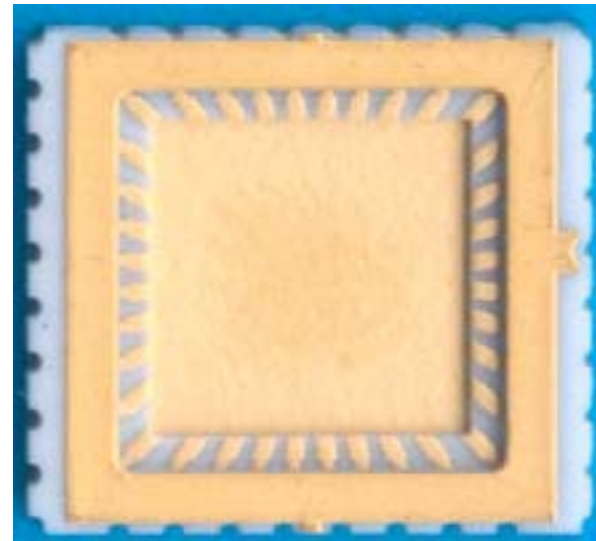


- First version (June 2005) integrates RadFET dosimeters only:
 - 8 x Low sensitivity; High-Dose range (REM TOT-50x).
 - 2 x High sensitivity; Low-Dose range (LAAS).
- Standard External Connectivity;
- Next versions integrate neutron sensors and & T probe.

9.4 × 10.4 × 1.6 mm 36-pin
Ceramic carrier with lid

Radiation Field Compatibility:

- $X = 3.7 \% X_0$
- e^- cut-off $\cong 550$ KeV
- p cut-off $\cong 10$ MeV
- γ transmission ≥ 20 KeV
- n attenuation $\cong 2-3 \%$



Detailed drawings and pin-out available on
RADMON webpage